

SHORT

ADVICE

SHARED SENSE OF PURPOSE

ABOUT US



Your purpose is our mission!

We learn to understand,
compliment it with leading industry expertise,
develop the mutual path to success,
ensure implementation through execution.

Together we are effect & impact makers!

GET TRANSPARENCY INTO

SUPPLY CHAIN INTERRUPTION



Jochen Pirklbauer

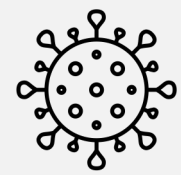
OWNER & FOUNDER

I have been specializing in the Global Ocean Freight market for more than 35 years, in a variety of leadership functions, with international freight forwarding corporations around the globe.

In 2020 I have decided to found my own company, for the purpose to share my expertise and advise to customers on their individual journey, utilizing my abilities to implement and generate impact.

CONSIDER

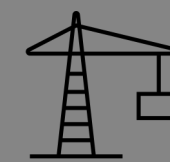
3 HEAVY IMPACTS



COV-19

Unpredictable changes, impacting the world

- different approach by governments
- border closures
- e-commerce boom vs. 'high' street shopping
- vaccination shortages
- travel & tourism restrictions / stop
- unpredictable impact on global economy



GLOBAL INFRASTRUCTURE

Global Trade – infrastructure impact

- vessel berthing delayed
- terminals & hinterland infrastructure overload
- equipment blocked
- substantial rates and cost increase
- service quality collapsing
- consequential supply chain interruption



“EVER GIVEN”

Blockage, leading to

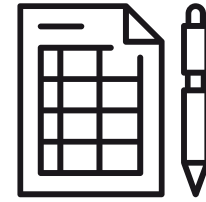
- schedule delays, re-scheduling
- infrastructural overload
- equipment shortage, space problems
- supply chain interruption
- rates & cost increase
- huge economic damage > 2bn

ADVICE FOR YOU



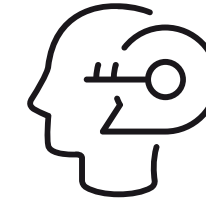
CHECK

- Your orders, supposed to be shipped in the next 4-8 weeks



REVIEW

- Your inventory
- Define critical items and volumes
- Specify demand



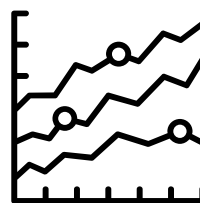
CONSIDER

- Advertising & Promotions
- Supply chain interruptions of your customers in demand of your products
- Collaboration beyond boundaries



SPEED UP

- Production and shipping in Asia
- Consider partial deliveries / loads



AVAILABILITY

- Check and ensure availability of additional space for the speed-up products
- Consider LCL services for partial shipments in exchange to FCL



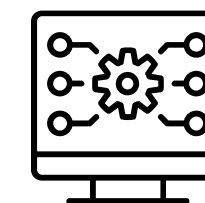
SECURE

- Airspace for 25% or more on all items potentially interrupting the supply chain



MONITOR

- Infrastructural heat map for ports, terminals, landside transportation, vessel re-scheduling, equipment situation, cost explosion



MITIGATE

- Risk by securing the supply chain
- Provide full visibility & transparency to your supply chain partners
- Inform your insurance

“

Currently predicted damage

to the economy

>2bn Euro

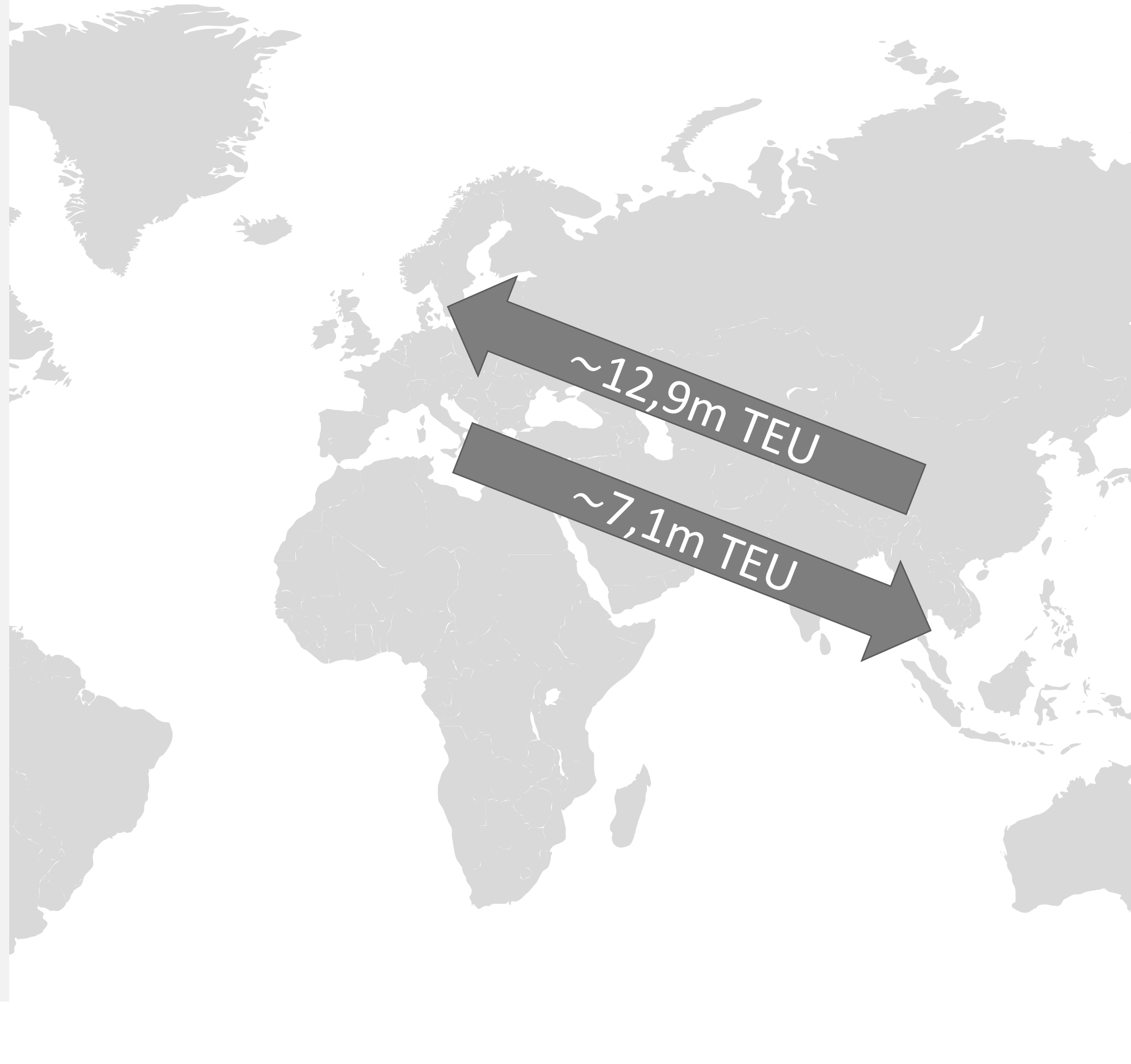
“Ever Given”

Far East – Europe – Far East



Far East – Europe Trade Highlights

- Currently approx. 1 week delay for vessel ETA of effected sailings
- Considering port, terminals and hinterland dynamics – depending on how fast you can secure your space – delays up to another 3 weeks to be considered
- Cost occurring due to demurrage & increasing rates
- Approx. 50-70.000 TEUs p.w. less on the backhaul for 4-6 weeks ahead
- Resulting in an equipment problem in Asia for a period of 6 weeks as of mid May



Europe – Far East Trade Highlights

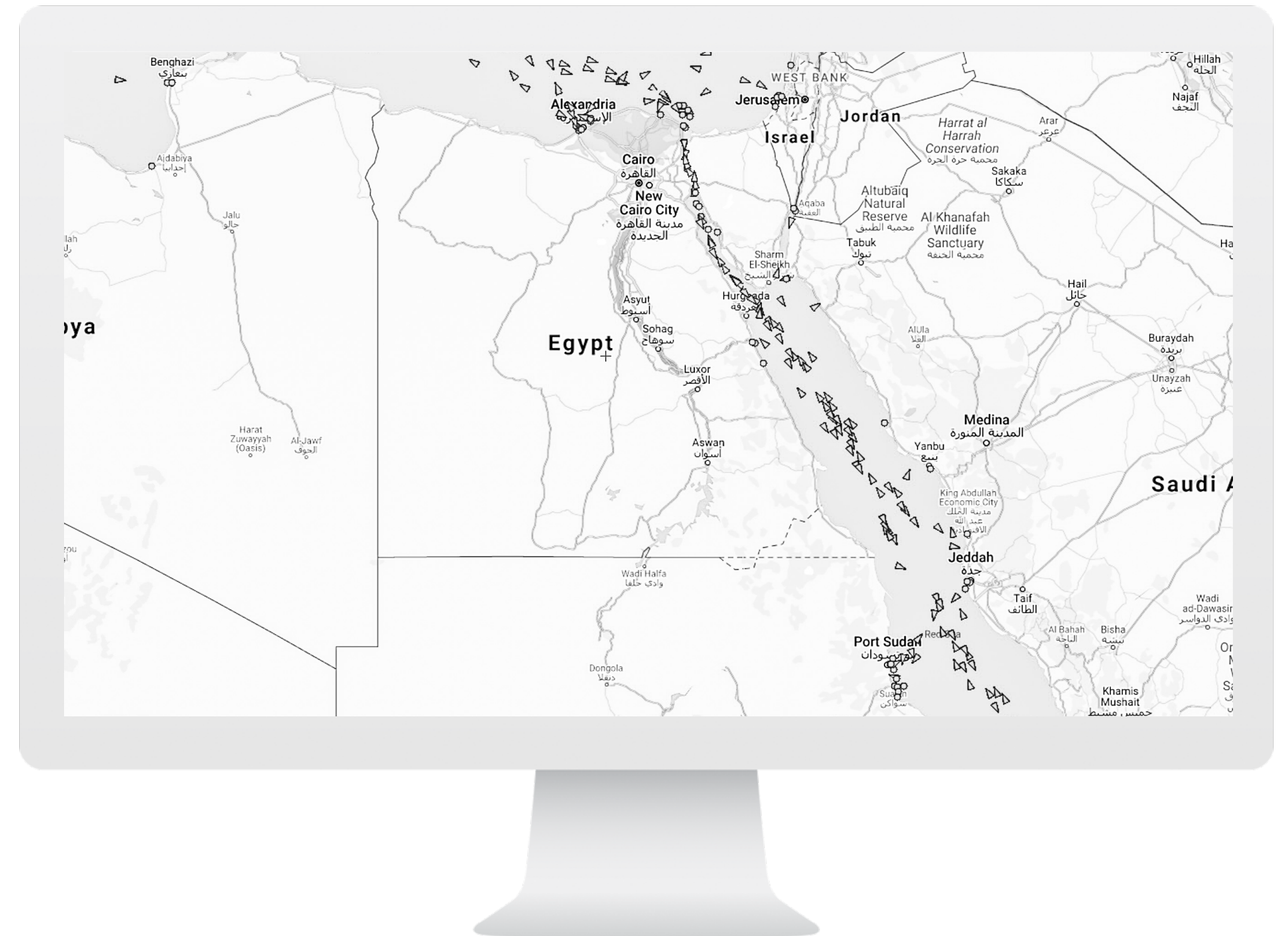
- Currently approx. 1 week delay for vessel ETA of effected sailings
- Infrastructural issues to empty the equipment in time will lead to equipment shortage
- Warehouse capacities will further delay discharging of containers
- Rates will increase as task is to get empty equipment back to Asia
- Further increase of equipment being moved empty rather than laden to Asia
- Certain cargo will switch to bulk, away from containerized, due to rate development

SUEZ – CANAL

Due to the blockage of the Suez-Canal starting on the 23rd of March around 05:40 am UTC by the “Ever Given” until 29th of March around 5:00pm UTC more than 300 vessel each end have been obstructed by the event.

The recovery to a normal pass-through-rate shall be reached within 8 days, best case at around 5 days.

Next stage is to monitor the vessel re-scheduling following the event in order to get the trade-schedules back on track.

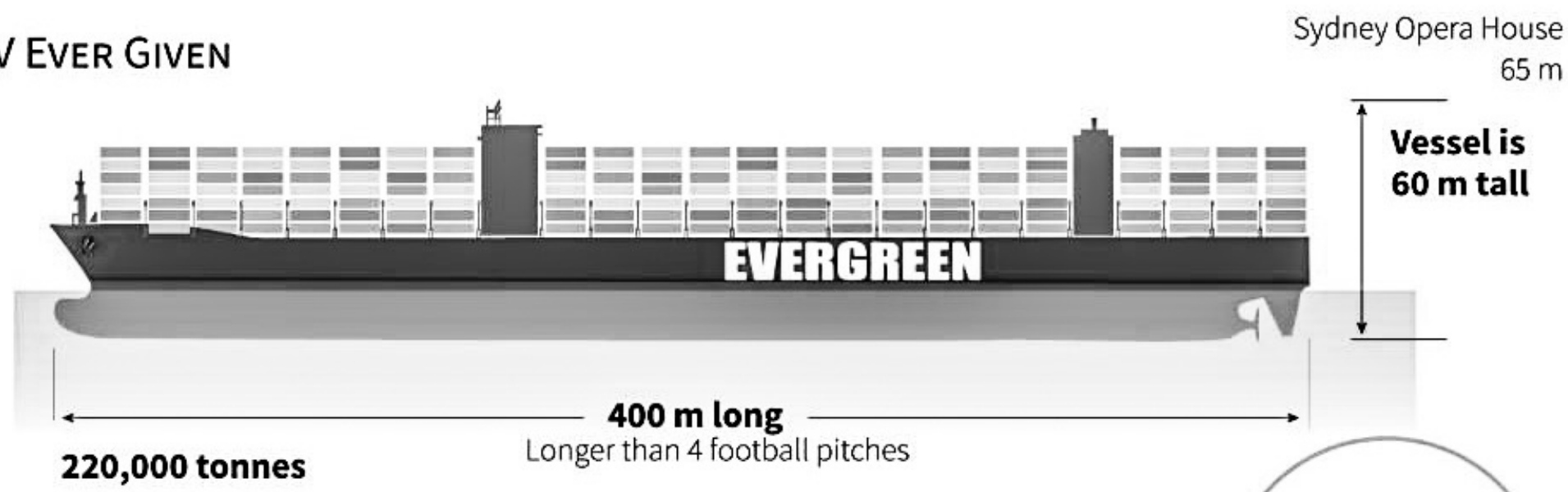


“EVER GIVEN”

MV Ever Given and the Suez Canal

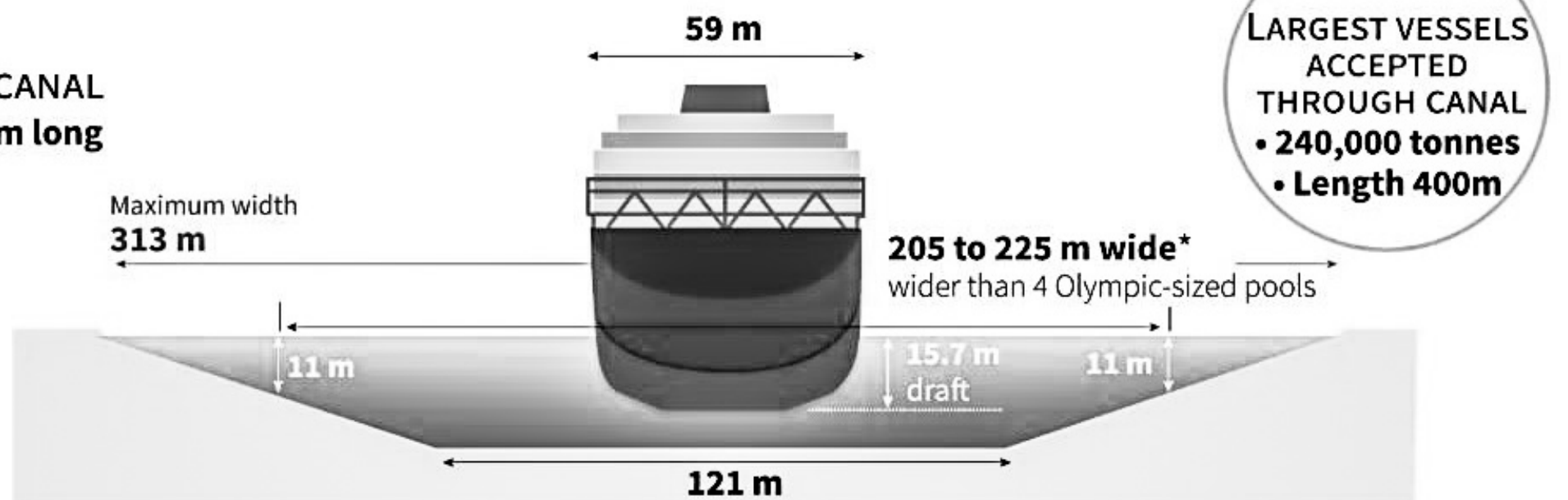
The huge container ship of the Evergreen Marine Corporation has blocked the canal

THE MV EVER GIVEN



SUEZ CANAL

193.3 km long



Maximum acceptance leads to maximum risk and to maximum impact in the event of an accident. And this is what we have seen so far with the “Ever Given” aground the Suez-Canal.

With the length of 400m and 220.000 tons the limit of the Suez-Canal was almost reached and if such weight grounds, refloating becomes a severe issue. Thanks to professional recovery the impact was kept amazingly low.

Now insurances and legal advisors will have to seek as to how this accident is being dealt with. We recommend, that all impacted customers inform their insurance companies in regards to their loss, damage and potential consequential damage.



CONTACT US

Your trusted advisory company, servicing your demand during your journey from start to end.

LOCATION

Hamburg – Germany

Vienna – Austria

LEGAL / DISCLAIMER

Please find all relevant info @
<https://www.invictus-adv.com/terms-conditions>

GET IN TOUCH

+49-162-2780848

jochen.pirklbauer@Invictus-adv.com

MORE INFO

www.invictus-adv.com

